

# MONTHLY MEMBERSHIP PROGRESS REPORT

District 317 E

Results as of: 6/30/2024

GMT:

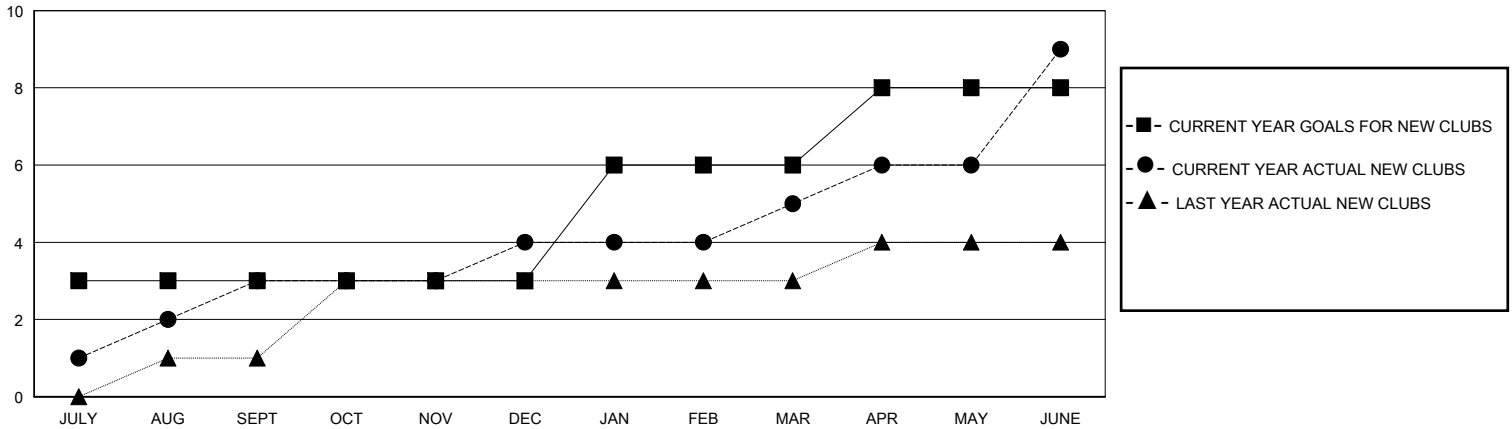
LOCATION INDIA

GMT CA

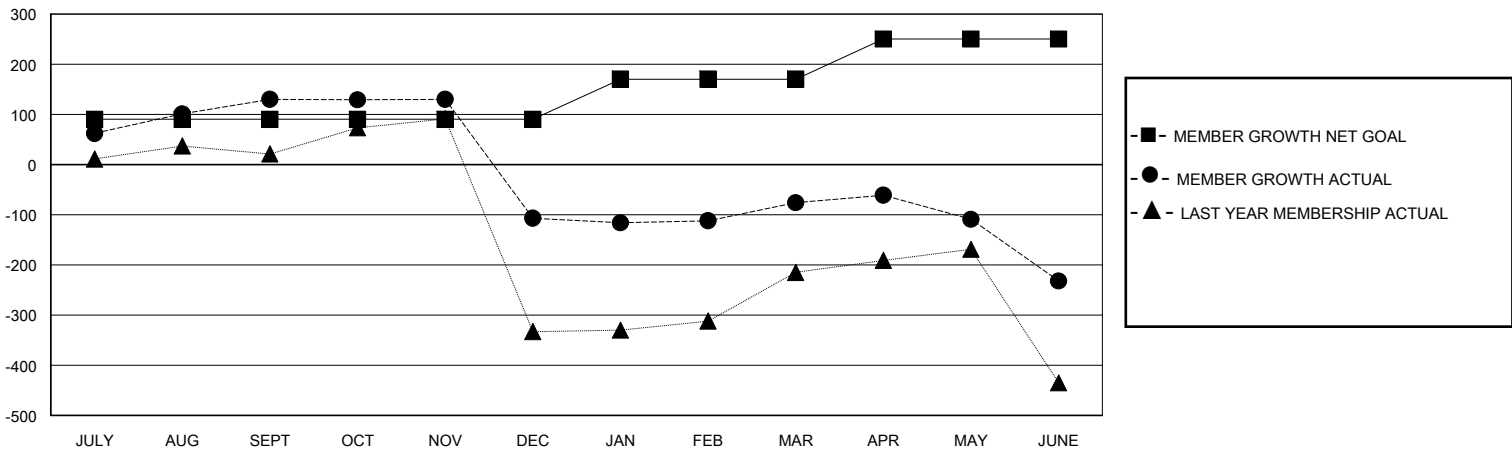
Clubs			
RESULTS FOR 2023-2024			
QUARTER	NEW CLUB GOAL	NEW CLUBS	DROPPED CLUBS
JULY/AUG/SEPT	3	3	1
OCT/NOV/DEC	0	1	10
JAN/FEB/MAR	3	1	1
APR/MAY/JUNE	2	4	2

Members			
RESULTS FOR 2023-2024			
QUARTER	MEMBER GROWTH NET GOAL	MEMBER GROWTH ACTUAL	DROPPED MEMBERS ACTUAL (including transfers)
JULY/AUG/SEPT	90	231	96
OCT/NOV/DEC	0	49	283
JAN/FEB/MAR	80	65	33
APR/MAY/JUNE	80	140	277

GOALS AND ACTUAL NEW CLUBS CUMULATIVE



GOALS AND ACTUAL MEMBERS CUMULATIVE



DROPPED CLUBS: 14	59 CLUBS OF 86 ADDED 1 OR MORE NEW MEMBERS	<b>GENDER DISTRIBUTION</b>
		MALE 1,735 (74.15%)
		FEMALE 605 (25.85%)
<b>DROPPED MEMBERS</b>	<a href="#">CLICK HERE FOR CUMULATIVE MEMBERSHIP DATA</a>	TOTAL FAMILY UNIT MEMBERS 577
DECEASED 3		FAMILY MEMBERS PAYING HALF DUES 335
CLUB CANCELLED 276		
OTHER 410		
<b>TOTAL 689</b>		